

Marjorie Park

SELF-GUIDED ART TOUR

🔊 **Dial-In Audio Tour 303-353-1714**

Enter "1" and the 3-digit Audio Code in the artwork description. At any time you may enter "1" and another 3 digit Audio Code. MOA also offers guided art tours. Visit moaonline.org/tours to learn more about guided tours.

MARJORIE PARK EVENTS

We invite you to enjoy a variety of fun, family friendly, artful events. Most events are held at our Marjorie Park location in Greenwood Village. Event season picks up in May and winds down by October. Visit our website for the most current listing of upcoming events, ranging from concerts, art workshops, performances, movie nights, art tours, community gatherings and more.

Learn more at moaonline.org/events or email info@moaonline.org to inquire about hosting your private event in Marjorie Park.



**MUSEUM OF
OUTDOOR
ARTS**

**Marjorie Park and
MOA Headquarters**
6331 S. Fiddler's Green Circle
Greenwood Village, CO 80111

303-806-0444
info@moaonline.org
moaonline.org

FOLLOW US & TAG   
@OUTDOORARTS

Supported in Part by

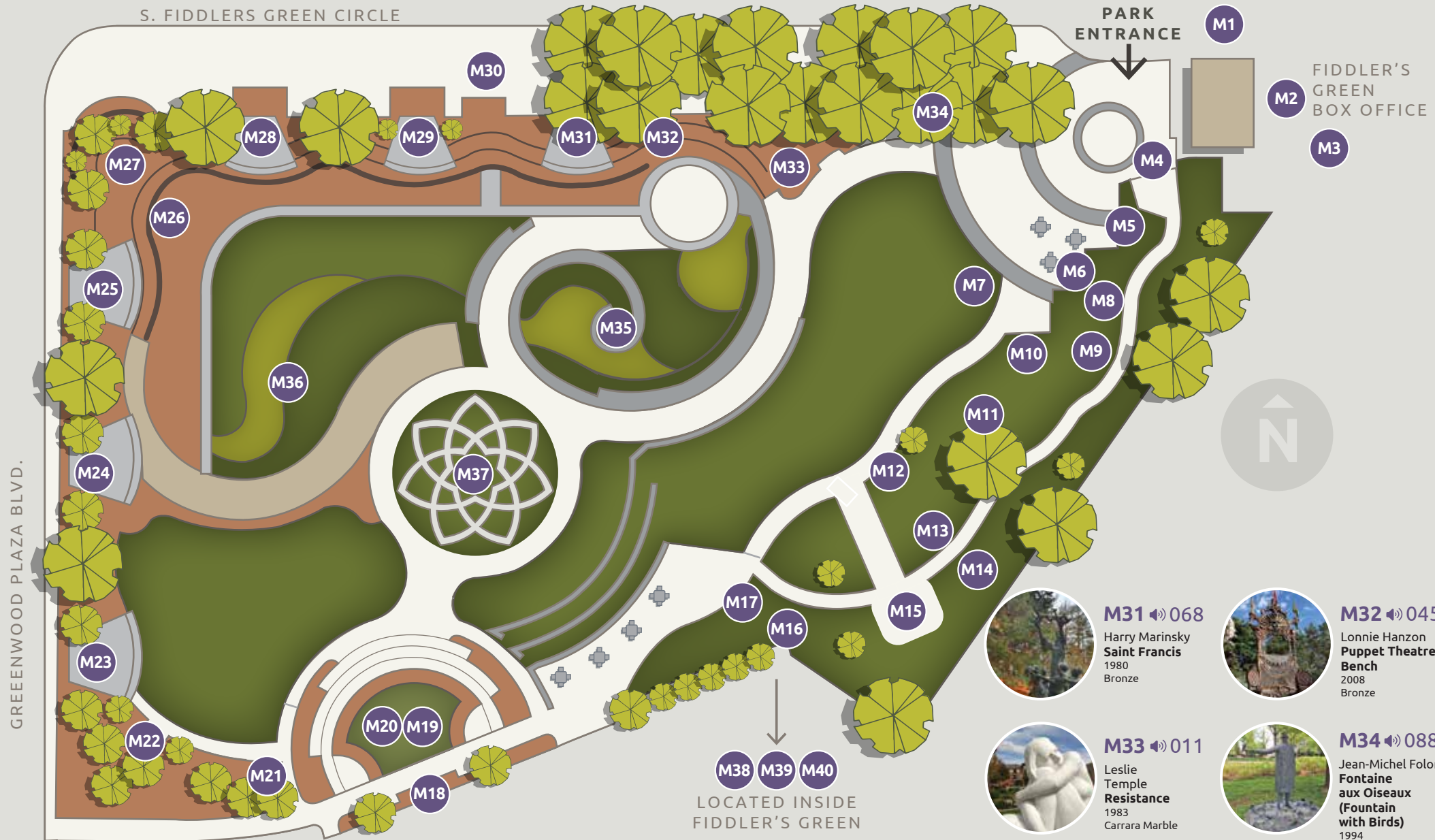


HOURS

Outdoor Galleries
Outdoor Public Locations
Accessible 24/7

Marjorie Park
6331 S. Fiddler's Green Cir.,
Greenwood Village, CO
Seasonal. Visit website for
current park hours.

- | | |
|---|--|
|  M1 📞 087
Reven Swanson
Uncomplicated Moon
2007
Mild steel, enamel and fused glass |  M2 📞 100
AJ Davis
Robin
2020
Spray paint on steel |
|  M3 📞 108
Aiden Joule
Eye of the Storm
2022
Stainless steel and steel |  M4 📞 077
Giovanni Antoniazzi
Resting Lions
Reproduction
Carrara marble |
|  M5 📞 047
Agnes Nyanhongo
Woman of Authority
2005
Spring stone |  M6 📞 027
Harry Marinsky
Three Gossips
1980
Bronze |
|  M7 📞 060
Roger Leitner
Sine Cera
2008
Carrara Marble |  M8 📞 072
Donatello
Marzocco Lion
1420 Reproduction
Limestone |
|  M9 📞 078
Artist Unknown
Winged Lion of St. Mark
1172 Reproduction
Limestone |  M10 📞 073
Artist Unknown
Veneto Lion
17th Century
Reproduction
Limestone |
|  M11 📞 065
Beniamino Bufano
Mother Bear & Cubs
1975-80
Marble and granite amalgam |  M12 📞 052
George Lundeen
Departure
1984
Bronze |
|  M13 📞 075
Artist Unknown
Lions of Lucca
1250 Reproduction
Stone composite |  M14 📞 029
Madeline Wiener
Stargazer
1999
Marble |
|  M15 📞 107
Lonnie Hanzon
Cabinet of Curiosities and Impossibilities
2024
Mixed media |  M16 📞 055
Artist Unknown
Cupola
Date unknown
Wood with copper veneer |
|  M17 📞 074
Artist Unknown
Etruscan Chimera
1500 Reproduction
Bronze |  M18 📞 093
Neil Goodman
Biography
2012
Bronze |



- | | | | | | |
|--|---|---|---|--|--|
|  M19 📞 059
Torval Keller
Silent Resonance
2002
Granite |  M20 📞 058
Ken Bortolazzo
Estacas
2006
Stainless steel |  M25 📞 051
Harry Marinsky
Alice & the Cheshire Cat
1994
Bronze |  M26 📞 044
Jon Leitner
Samson
1984
Bronze |  M35 📞 025
Robert Mangold
Windsong III
1989
Enamel on steel |  M36 📞 008
George Rickey
Two Open Trapezoids Excentric V
1978
Stainless steel |
|  M21 📞 048
Harry Marinsky
White Rabbit
1994
Bronze |  M22 📞 095
Roger Leitner
Chloe
2011
Colorado Yule marble |  M27 📞 054
Harry Marinsky
The Mad Tea Party
1994
Bronze |  M28 📞 053
Harry Marinsky
The Queen of Hearts
1994
Bronze |  M37 📞 099
Seven Petal
Vesica
2020
Colorado rose sandstone |  M38 📞 096
Reven Swanson
Stairway to Heaven
2020
Fused glass |
|  M23 📞 049
Harry Marinsky
Alice & the Caterpillar
1994
Bronze |  M24 📞 050
Harry Marinsky
Old Father William
1994
Bronze |  M29 📞 042
Harry Marinsky
The Walrus and the Carpenter
1994
Bronze |  M30 📞 102
Victorian
Diorama
Features Seasonal Installations
Copper and wood |  M39 📞 109
Various Artists
23 Murals
2020-2024
Paint on panel |  M40 📞 105
Panoramic
Living Mural
2014
Steel and living plants |



**MUSEUM OF
OUTDOOR
ARTS**

Marjorie Park Englewood City Center and Greenwood Plaza Self-guided Art Tour



MOAONLINE.ORG

ENGLEWOOD CITY CENTER Self-guided Art Tour



FOLLOW US & TAG @OUTDOORARTS



GREENWOOD PLAZA Self-guided Art Tour



- E1** 084 Ivan Mestrovic **Luke the Evangelist** Date unknown Bronze
- E2** 003 Corwin Bell **Rosewater Chandelier** 2007 Glass, steel
- E3** 004 Craig Marshall Smith **Rodger** 2005 Mixed media
- E4** 002 Randy Jewart **U.P., Up #1** 2001 Limestone, steel
- E5** 006 Red Grooms **Brooklyn Bridge** 1977 Painted Steel
- E6** 007 Andy Miller **Bathroom People** 1999 Steel
- E7** 012 Amy Laugesen **Horizon** 2001 Concrete, steel
- E8** 010 Tom Ware **Mujer Del Lago (Lady of the Lake)** 1992 Bronze
- E9** 026 Donatello **Marzocco Lion** 1420 Reproduction Limestone
- E10** 028 Pietro Tacca **Porcellino** 1612 Reproduction Bronze
- E11** 030 Madeline Wiener **Marble On My Mind** 1993 Marble
- E12** 031 Artist Unknown **Greek Temple Dog** Reproduction Sandstone
- E13** 032 Todd Siler **The Dream Tree** 2000 Enamel on steel
- E14** 033 Robert Mangold **PITSAAES (Particle Traveling through Space At An Erratic Speed)** 1999 Enamel on steel
- E15** 018 Lynn Tillery **Child of Peace** 1983 Bronze
- E16** 086 Joel Perlman **Mountain** 1980 Steel
- E17** 019 Guy Dill **Wolf Angel** 1998 Painted steel
- E18** 089 Darryl Pottorf **Dervish** 2017 Powder-coated aluminum Balcony installation visible from outdoors
- E19** 085 James Mitchell **Blatant Proposals** 1985 Enamel, steel
- E20** 023 Alissa Neglia **Untitled** 1999 Steel
- E21** 014 John Isherwood **Night Movement** 1998-99 Granite
- E22** 015 Grace Knowlton **Untitled** 1997 Copper
- E23** 020 Mark Warwich **Measurement** Steel, aluminum
- E24** 017 John Adduci **Ajnja's Column** 2001 Steel
- E25** 022 Stephen Hokanson **In Stance** 2001 Steel

DESIGN AND BUILD

Since 1991, MOA's Design and Build program has provided an opportunity for emerging artists, students and creative minds to express their creativity in collaborative art, architecture and design projects. Since the inception of the program, thousands of students have collaborated on innumerable projects. The program offers a summer internship, a national design competition, fellowship, community outreach and alumni opportunities.

LEARN MORE AT MOAONLINE.ORG/DESIGN-AND-BUILD

BECOME A MEMBER

Show your support for MOA and Marjorie Park by purchasing an annual or corporate membership for yourself, your family, or your company. Becoming a member helps support MOA education programs, exhibitions, conservation, art events, and more and provides enriching arts experiences within our community.

LEARN MORE & SIGN UP AT MOAONLINE.ORG/MEMBERSHIP



MOA & MARJORIE PARK HISTORY & MISSION

Founded in 1981 by developer John W. Madden, Jr., Marjorie Madden, and their daughter, Cynthia Madden Leitner, the Museum of Outdoor Arts is a synthesis of fine art, architecture and landscape design integrated into the community and business environment.

Our art collection is primarily located in Englewood and Greenwood Village, within various public locations, as well as throughout the Denver metro area and beyond. From commercial office parks to botanic gardens, city parks and traditional sculpture gardens, art is placed to interpret space as "a museum without walls." Foremost, MOA believes in its mission of "making art a part of everyday life."

One of MOA's primary outdoor locations is Marjorie Park, named after MOA co-founder Marjorie P. Madden. It is located on the north side of Fiddler's Green Amphitheatre. The park reopened in 2021 after an extensive renovation project and features over 40 artworks, including a larger-than-life bronze "Alice In Wonderland" series.

Marjorie Park is programmed with several community arts related events, concerts, temporary exhibitions, and more! The park is also available to host private and corporate events.

MOA also contributes to the cultural scene through its ownership of Fiddler's Green Amphitheatre. The venue hosts prominent music performances during the outdoor concert season.

- G1** 090 Erick Johnson **Nest** 2012 Steel
- G2** 069 Giovanni Antoniazzi **Five Dolphins** 1980 Bronze
- G3** 070 Arnaldo Pomodoro **Disco Emergente** 1983-84 Bronze
- G4** 013 Lin Emery **Duo** 1992 Polished aluminum, steel and enamel
- G5** 076 Flaminio Vacca **Medici Lion** 1594 Reproduction Limestone
- G6** 062 Giambologna **Mercury** 1580 Reproduction Bronze
- G7** 063 George Carlson **Of One Heart** 1984 Bronze
- G8** 005 Woods Davy **Bella Donna** 1997 Stone, steel
- G9** 021 Steve J. Urry **Psychedilly Rose II** 1968-69 Aluminum
- G10** 041 Giovanni Antoniazzi **Bust of David** 1500 Reproduction Marble
- G11** 040 Daniel Ostermiller **Rearing Elephant** 1990 Bronze
- G12** 039 Daniel Ostermiller **The Bearing Wall** 2000 Bronze
- G13** 038 Harry Marinsky **Jealousy** 1981 Bronze
- G14** 016 John Hock **Franconia F. Horse II** 1998-2001 Steel
- G15** 101 George Hargreaves **Fiddler's Green** 1983 Landscape architecture
- G16** 094 Erick C. Johnson **All the Right Moves** 1989 Steel, plexiglass, lacquer paint, LED
- G17** 036 Dennis Leon **Bronze Logs** 1986 Bronze
- G18** 037 Beniamino Bufano **Bear** 1980 Concrete and marble amalgam
- G19** 035 Larry Kirkland **Flywheel** 1988 Stainless steel, aluminum, wood, screen