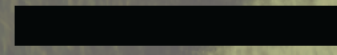
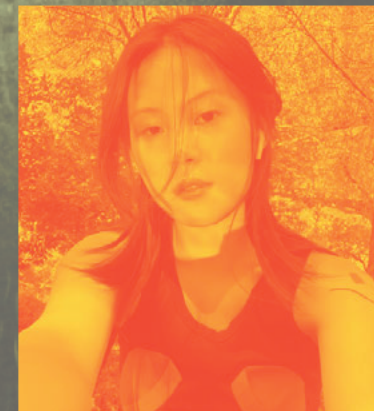


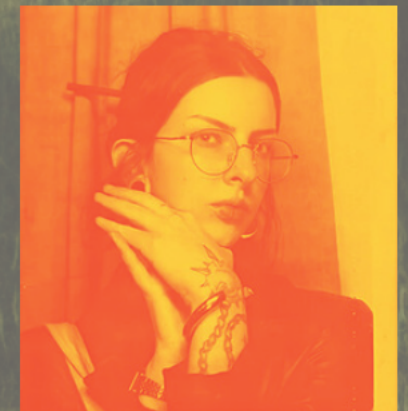
2024



Plexus Complexus Us



SERENA HANZHI WANG
4th Year BFA
Visual and Critical Studies



JESSIE SOOS
4th Year BFA
Fine Arts



SERENA HANZHI WANG

4th Year Student
BFA Visual and Critical Studies
School of Visual Arts
New York, New York

✉ : [REDACTED]
[REDACTED]
PRIMARY CONTACT

As a Chinese-born artist now residing in New York, I draw inspiration from my multicultural upbringing And my studies in the Visual & Critical Studies program, where I delve into the philosophical and historical underpinnings of art. Through this interdisciplinary approach, I explore the intricate interplay between philosophy and art, seeking to unravel the interpretative constructs that inform both the creation and reception of artwork. My work embodies a fusion of philosophy and artistic expression, inviting viewers to contemplate the profound connections between humanity and the natural world. By engaging with the landscape as both a canvas and a medium, I aim to evoke a sense of wonder and introspection, challenging viewers to reconsider their relationship with the environment and the broader cosmos.

About Us

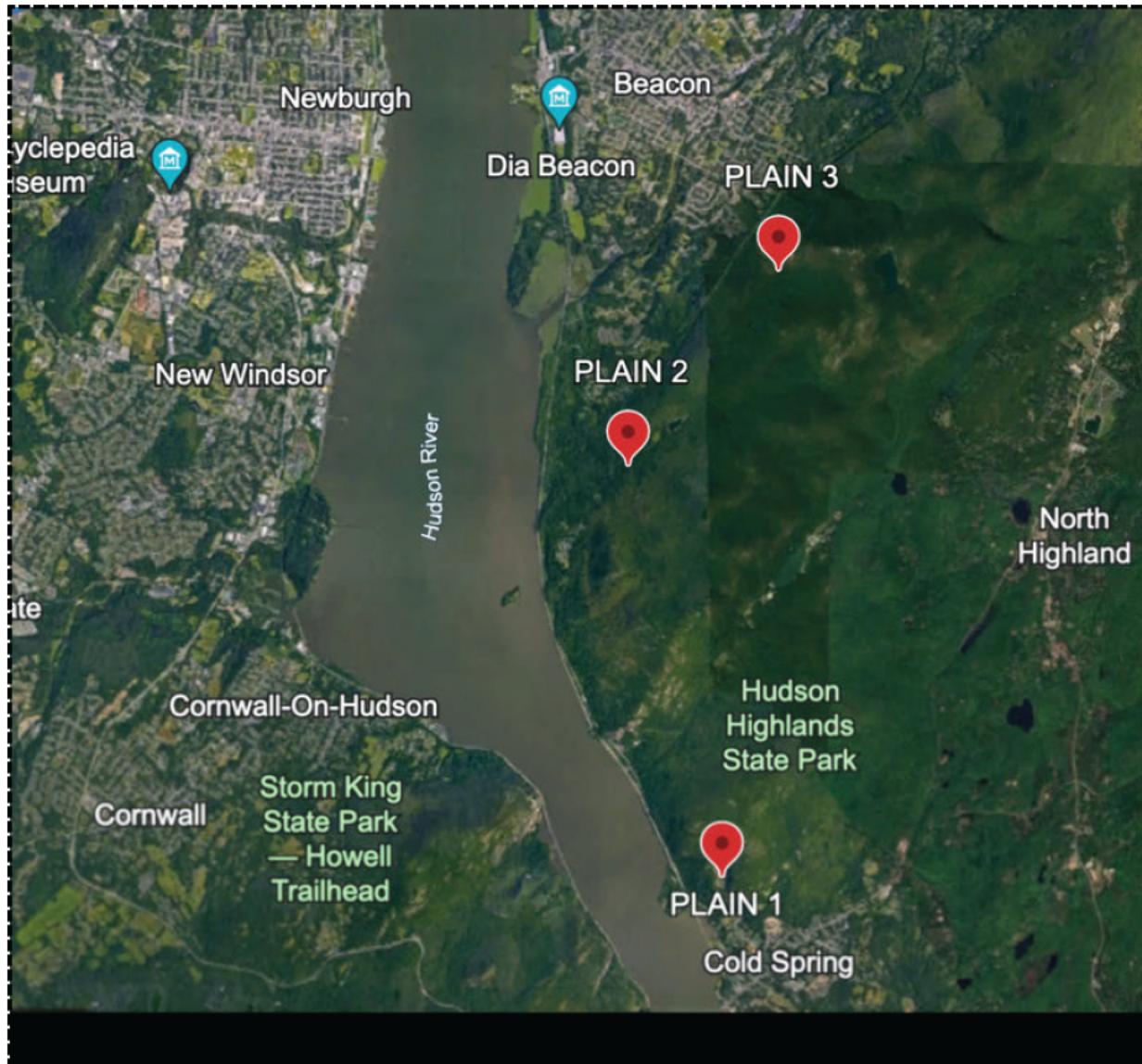


JESSIE SOOS

4th Year Student
BFA Fine Arts
School of Visual Arts
New York, New York

✉ : [REDACTED]
[REDACTED]

Jessie Soos, originally from New Jersey and now residing in New York City, is a fourth-year student at the School of Visual Arts. She infuses her work with deeply personal experiences that reflect the complexities of womanhood. Positioned artistically between the influences of figures like Louise Bourgeois and Kiki Smith, Soos captures a blend of emotion and abstraction in her work. She is captivated by a diverse array of subjects- including stories held by discarded objects, human form, and broader aspects of the human condition. While her primary focus is drawing and printmaking, Soos's artistic practice is versatile, extending to sculpture, video art, and photography, allowing her to explore and express her thematic interests across a wide range of mediums.



Upstate New York, USA, between the towns of Cold Spring and Beacon

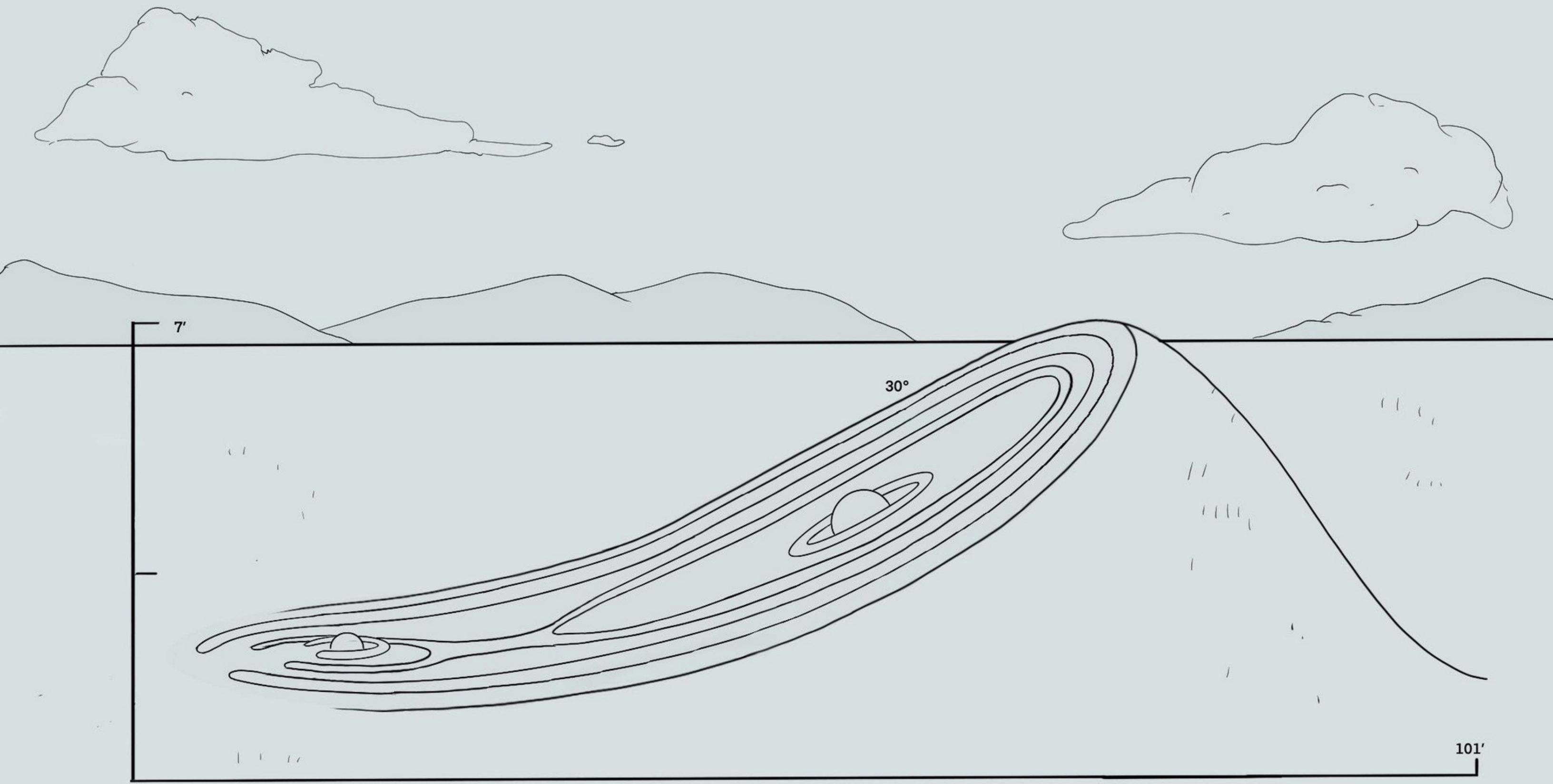
We have selected the plains as the location for our site-specific installation, specifically situated in upstate New York, USA, between the towns of **Cold Spring and Beacon**. Despite the region being predominantly mountainous, our recent visit to the area revealed numerous mid-sized plains nestled among the mountains, in close proximity to the Hudson River. We have selected this area for its strategic positioning between popular cultural destinations such as Dia:Beacon, Magazzino Italian Art, and Storm King Sculpture Park, all of which are accessible via public transit: a prime getaway spot for metropolitan residents. Our installation aims to capitalize on this influx of visitors, providing them with a public landscape to explore and interact with. Importantly, our installation will be free, distinguishing it from other art institutions in the area.

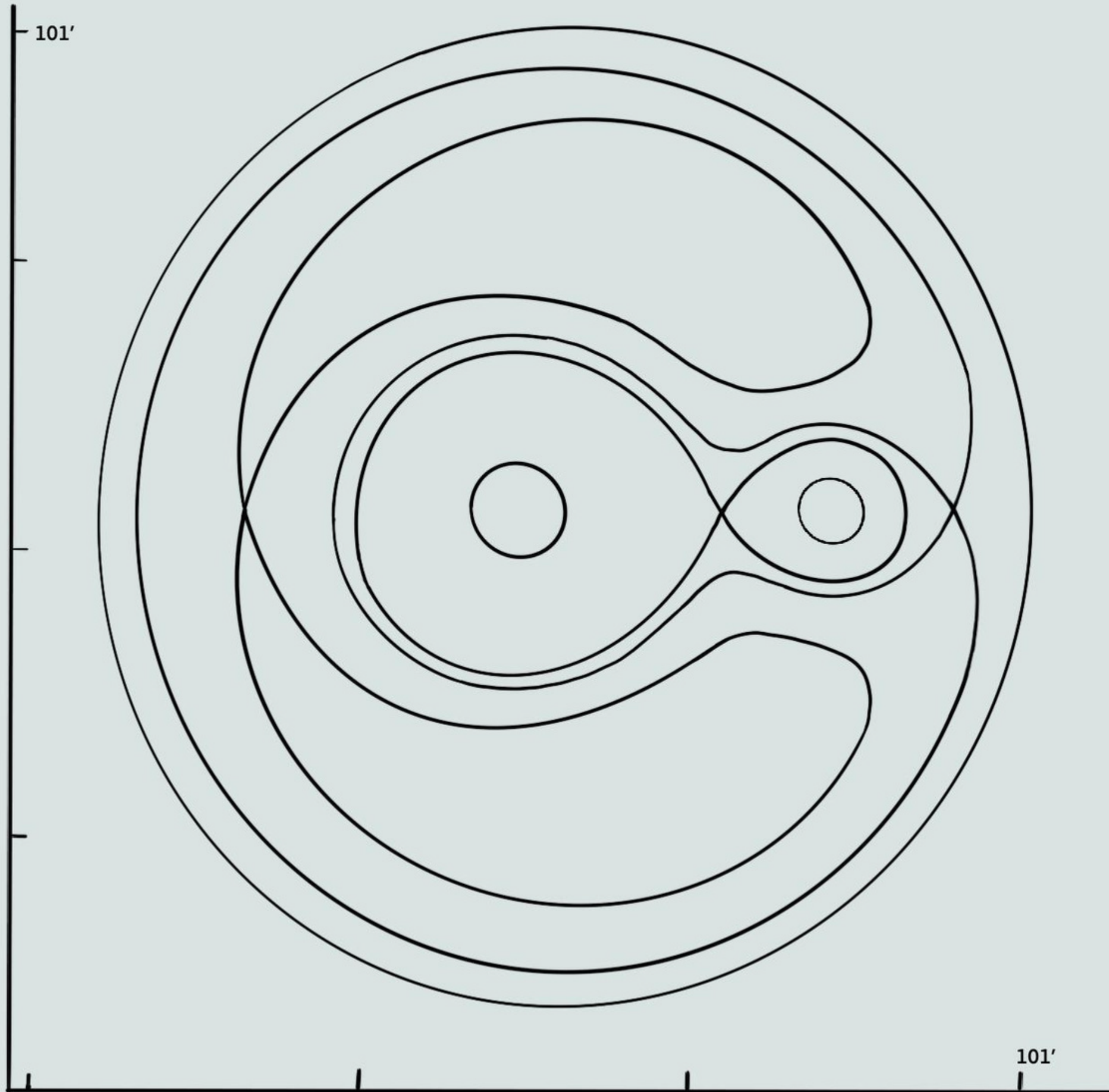
We categorize our piece within the realm of landscape architecture or land art. Several potential locations were considered, all open spaces within an undisturbed, natural setting. The **Plexus Complexus Us** Land Art piece we've envisioned embodies deep philosophical meanings, while maintaining a unique aesthetic appeal. While it's relatively straightforward to construct, and totally functional and economical.

The land art functions as a captivating and immersive experience for visitors, Through climbing up to the slopes through the intricate trenches path, the installation offers visitors a chance to engage with the beauty of nature while contemplating themes of gravity, cosmic forces, and their interconnectedness with the universe. Additionally, the incorporation of technology enhances the visitor experience, providing access to educational resources and virtual tours that enrich their understanding of the artwork and its conceptual underpinnings.

Measuring 101 feet long by 101 feet wide, the scale of **Plexus Complexus Us** utilizes binary numbers intentionally, symbolizes humanity's inclination towards binary systems. The construction utilizes 100% natural materials, involving the relocation of earth and sod, as well as the use of naturally carved stone. The allocated budget for this project amounts to \$80,000 USD. Through our proposed design choices and considerations, our installation will integrate harmoniously with the surrounding landscape while providing visitors with a distinctive and immersive experience within the natural beauty of upstate New York.







Project Narrative

1. How does your design relate to the theme of Land Art: Celestial Architecture?

Our design draws inspiration from celestial principles and natural phenomena, particularly the shape of the Roche lobe and the gravitational forces that define our universe. The Roche lobe refers to the gravitational influence exerted by a celestial body, shaping its surrounding space and affecting the orbits and forms of nearby objects. Through sculpting the landscape to mimic the shape of the Roche lobe, we aim to create a harmonious connection between earthly terrain and cosmic influences, echoing the themes of Celestial Land Art.

The secondary aspect of the art experience involves carving a short anecdote or instructions onto a central stone structure. This prompts viewers to pay attention to invisible forces that are often overlooked in urban environments, such as gravity's effects on the body; the presence of cosmic rays, which permeate every corner of the Earth. All encourage contemplation of our interconnectedness with the cosmos. Walking consciously through these forces, reminding people we are part of the cosmos, is the goal.

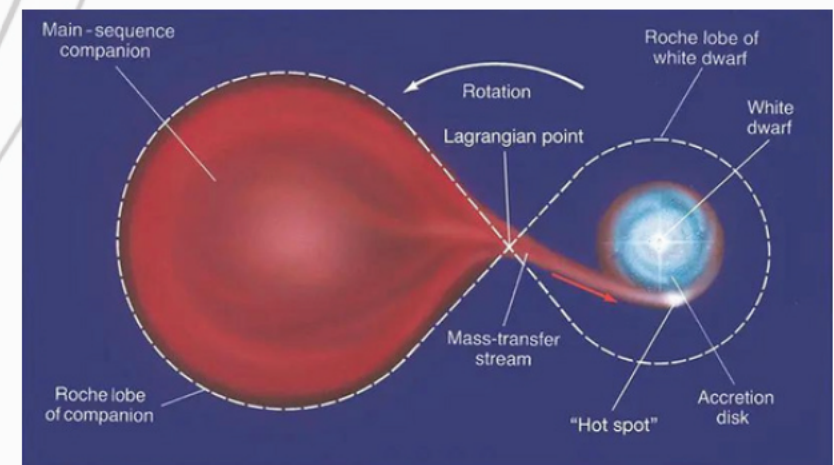
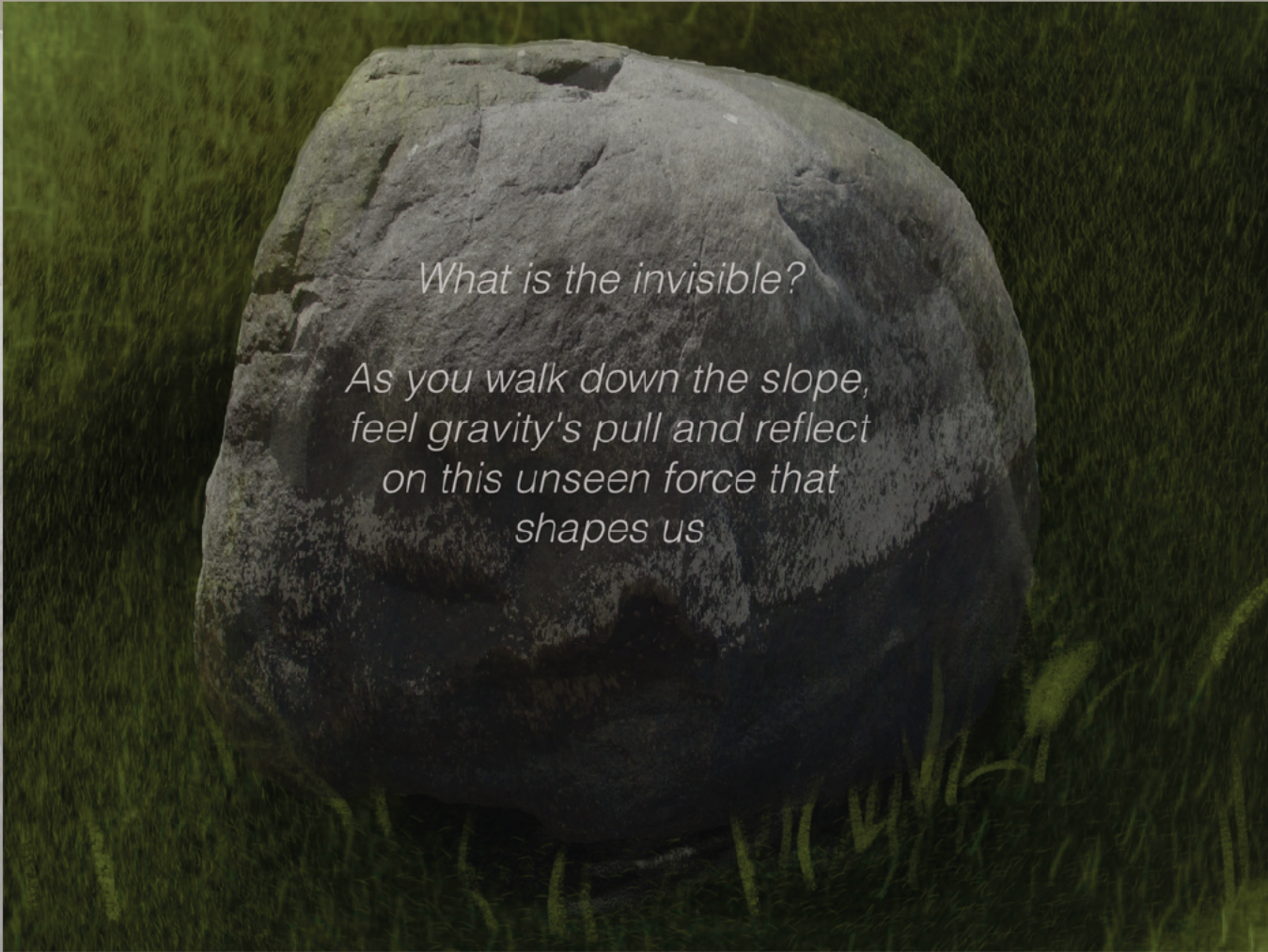


Diagram of a binary star system, showing the Roche lobes of a red giant star (left) and a white dwarf (slideplayer.com)

101'

101'



What is the invisible?

*As you walk down the slope,
feel gravity's pull and reflect
on this unseen force that
shapes us*

2. Proposed materials

Our design utilizes 100% native materials, including earth and rock sourced from the surrounding plainfield, to construct a landmark and park that seamlessly blends with the natural environment. Inspired by Effigy mounds like the Serpent Mound in Ohio and other prehistoric mounds, we will shape the land into a half hill-like slope, with one surface embedded with intricate trenches. The construction method involves careful manipulation of the terrain to achieve the desired forms. Ideally, a skilled construction team equipped with heavy machinery such as excavators will assist us in realizing the design.

3. Construction and Time Frame

The construction process involves shaping the landscape over a 101 feet long and 101 feet wide area. It will take approximately two weeks to construct, with an additional 2 – 6 weeks for curing. One week will be dedicated to building the slope, and another week will be allocated for constructing the trench maze atop the hill. Once the basic structure is built, sod will be transferred to the surface and allowed 2-6 weeks to cure.

4. Collaboration

During the two weeks of shaping the main structure, two local stone carvers will intricately carve the native stone using a water laser technique, under the guidance of Artist Serena and Jessie and Kayla Gibbons (Sculpture professor at School of Visual Arts). The stone selected for the artwork will be locally sourced granite, known for its durability and aesthetic appeal, reflecting the natural landscape of the region. Collaboration among skilled artisans, including stone carvers and construction experts from workshops in Kingston, ensures the efficient realization of the design. This collaboration not only celebrates local craftsmanship but also promotes sustainability by minimizing transportation and supporting the regional economy.



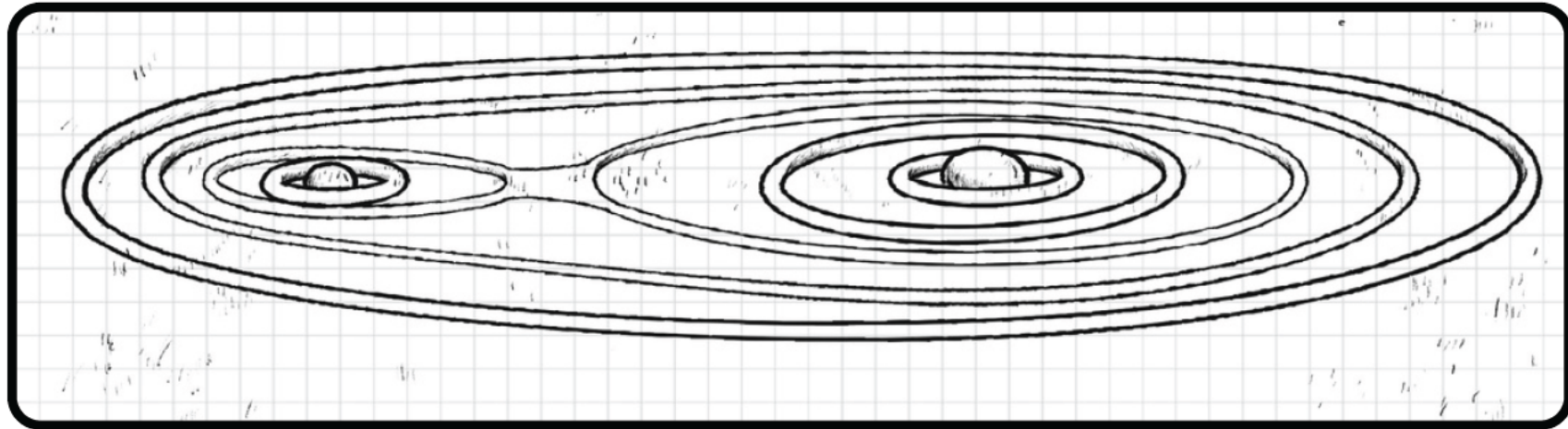
5. Public Facing & Safety

Our installation will serve as a public landscape for visitors to explore and interact with, attracting tourists and locals seeking respite from urban environments. Positioned between popular destinations like Dia:Beacon and Magazzino Italian Art, we've carefully considered safety concerns, particularly regarding slope incline, especially for children and the elderly. After thorough research, we've determined that a 30-degree incline angle strikes a balance between safety, aesthetics, and visitor engagement. Additionally, the entire park surface is covered with grass, acting as a natural carpet and minimizing any risk of falls. Clear signage and supervision further ensure that visitors navigate the terrain with ease and enjoy the experience safely.

6. How does the artwork address the climate in which it would reside?

The design embraces sustainability by utilizing native materials and promoting environmental consciousness. Integrated into the natural landscape, it seamlessly blends with the surrounding ecosystem, contributing to biodiversity and ecosystem health. By fostering a deeper connection with nature, the installation encourages visitors to reflect on their relationship with the environment, whether it's the gravity within Earth, the gravity outside of Earth, or the gravity between individuals. This encourages a shift away from solipsistic thinking, promoting a broader awareness of our interconnectedness with the natural world.

By immersing visitors in these contemplations, we aim to expand their perspective and evoke a sense of unity with the universe. The choice of a binary scale, represented by the installation's dimensions of 101 x 101, symbolizes humanity's inclination towards binary systems. However, the trues of the universe lies in exploring the spaces between 1 and 0, where the invisible and infinite aspects of gravity and cosmic rays exist. These spaces invite sublime contemplation and evoke a sense of wonder in the mind.



7. Technology

While our design prioritizes a low-tech approach, collaborating with a skilled construction team equipped with heavy machinery for construction, we rely primarily on natural processes to shape and maintain the installation. This land intervention is rooted in ideas and philosophy, following in the lineage of land art masters such as Robert Smithson, Agnes Denes, and Nancy Holt.

Additionally, we incorporate technology to enrich visitor experience and accessibility. An interactive website provides information on locating the artwork, while digital tools offer educational resources and virtual tours. These technological elements complement the organic nature of the installation, enhancing the overall narrative and engagement for visitors.

8. Environmentally Sustainable

The design's sustainability lies in its integration with the natural landscape and use of local materials. By minimizing ecological footprint and promoting biodiversity, it contributes to environmental conservation efforts. Additionally, the installation's longevity and resilience ensure minimal maintenance requirements, further reducing environmental impact over time.

9. Open question: Is there anything else you would like to tell us about your proposal?

Our proposal seeks to create a transcendent experience that connects individuals with both the terrestrial and celestial realms. Through mindful design and thoughtful integration with the environment, we aim to inspire contemplation, curiosity, and a deeper appreciation for the wonders of the natural world.

Estimated Budget

1. Materials:

- Native earth and rock (move/relocating):
- Sod (turf) for surface covering:
- Stone for carving:



\$10,000
\$5,000
\$3,000

2. Construction:

- Skilled construction team (2 weeks):
- Heavy machinery rental (excavators, etc.):



\$20,000
\$15,000

3. Installation:

- Installation labor (artists for carving stone):



\$7,000

4. Safety Measures:

- Signage and safety barriers:



\$2,000

5. Technology:

- Website development:
- Digital tools and virtual tour creation:



\$5,000
\$3,000

6. Contingency (10% of total):



\$10,000

Total Estimated Budget:



\$80,000