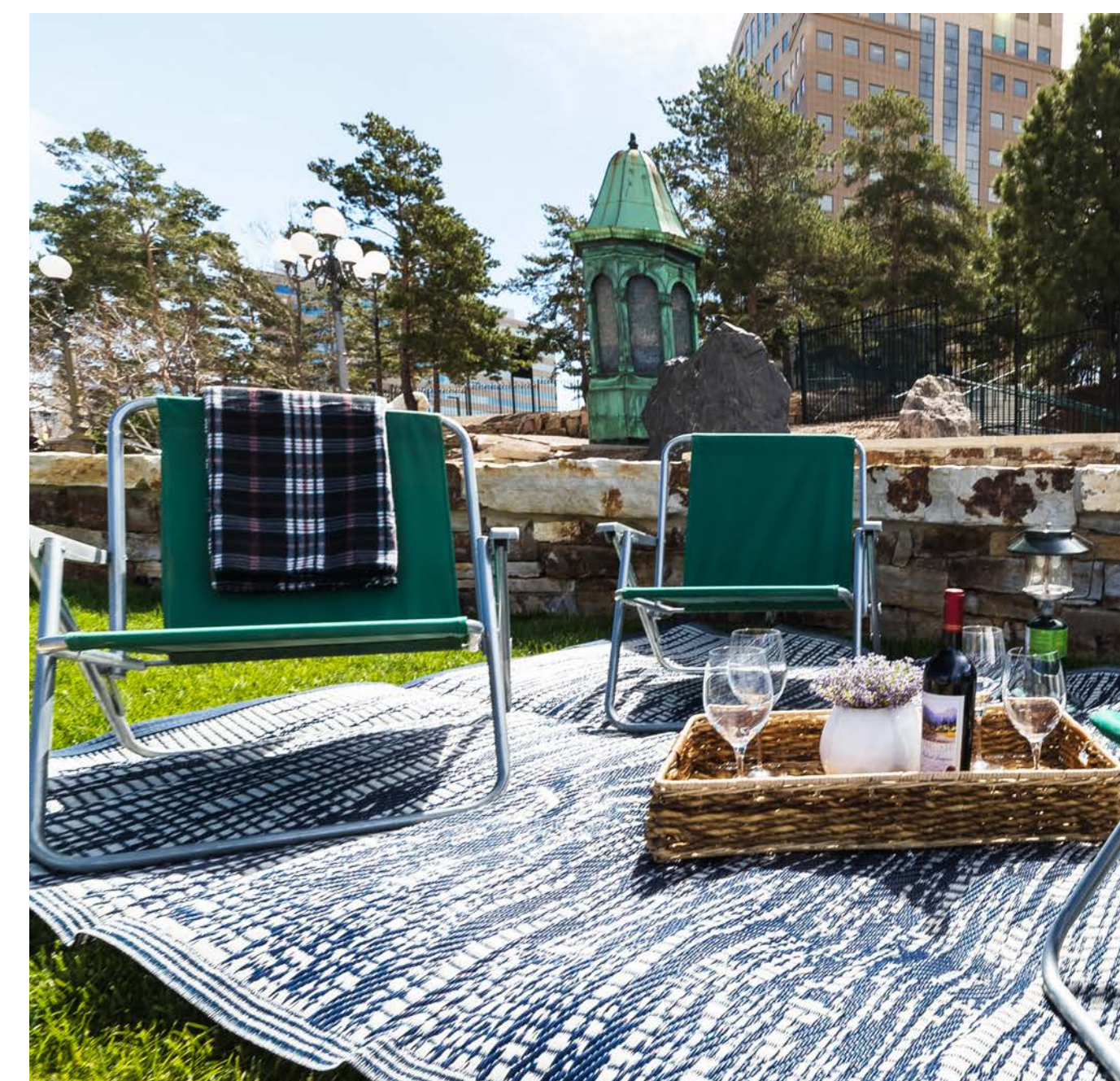
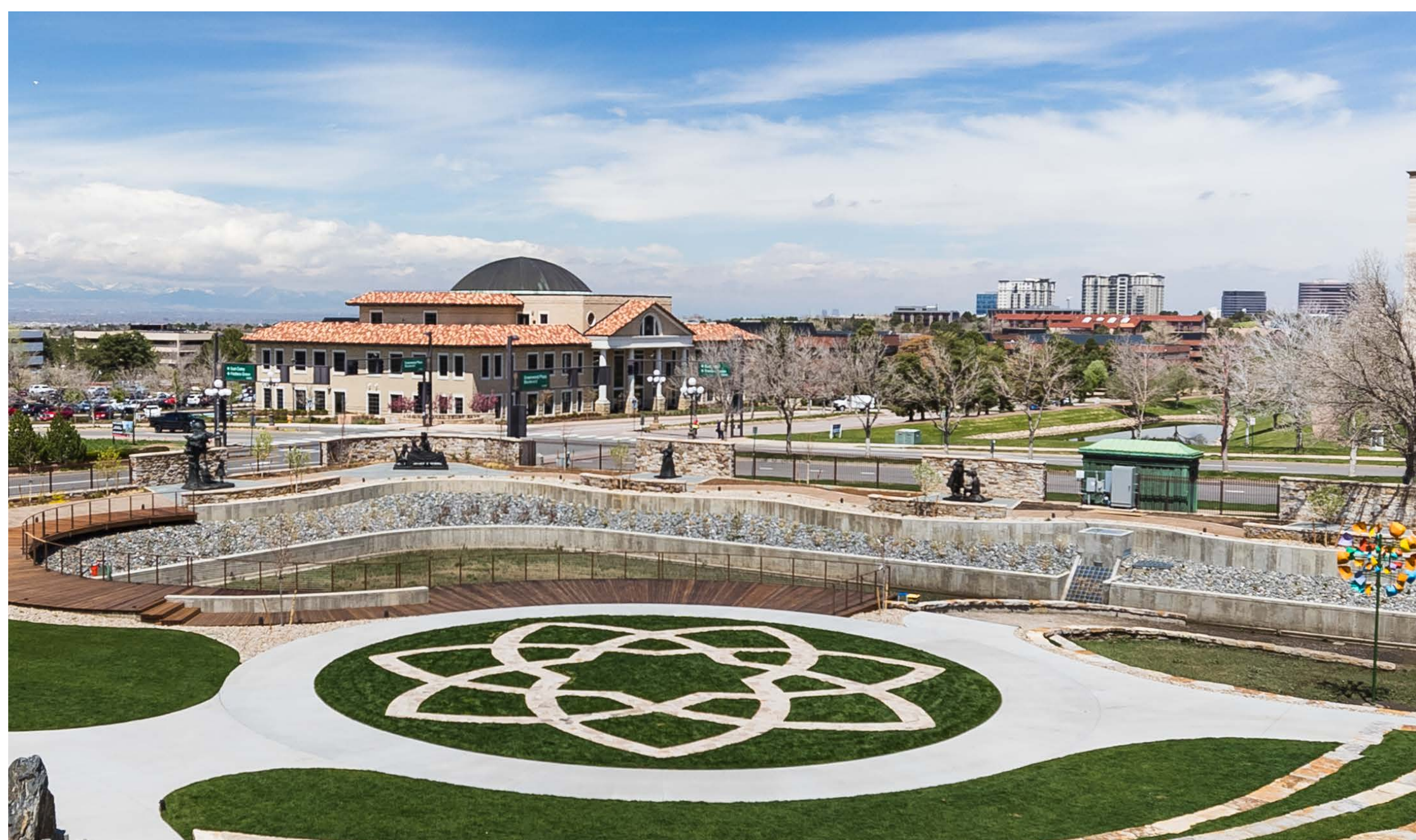


III O Δ
MUSEUM OF
OUTDOOR
ARTS

Marjorie Park

An Outdoor Museum and Events Venue



Discover Wonderland!

Marjorie Park

Owned and operated by the Museum of Outdoor Arts, a Colorado non-profit arts organization since 1981, Marjorie Park is a truly unique venue to host your special event. Connected to Fiddler's Green Amphitheatre to the south and completely renovated in 2020, it was built as a sculpture park with several art installations throughout. Designed with an English garden aesthetic, this unique and intimate space will delight guests of all ages and help you create special memories that will last for years to come.

The park can accommodate a variety of event needs and can be tailored to fit your special day. The following slides are just a few examples of the many unique spaces and configuration options within the park.

Let us help you make your special event a memorable one!



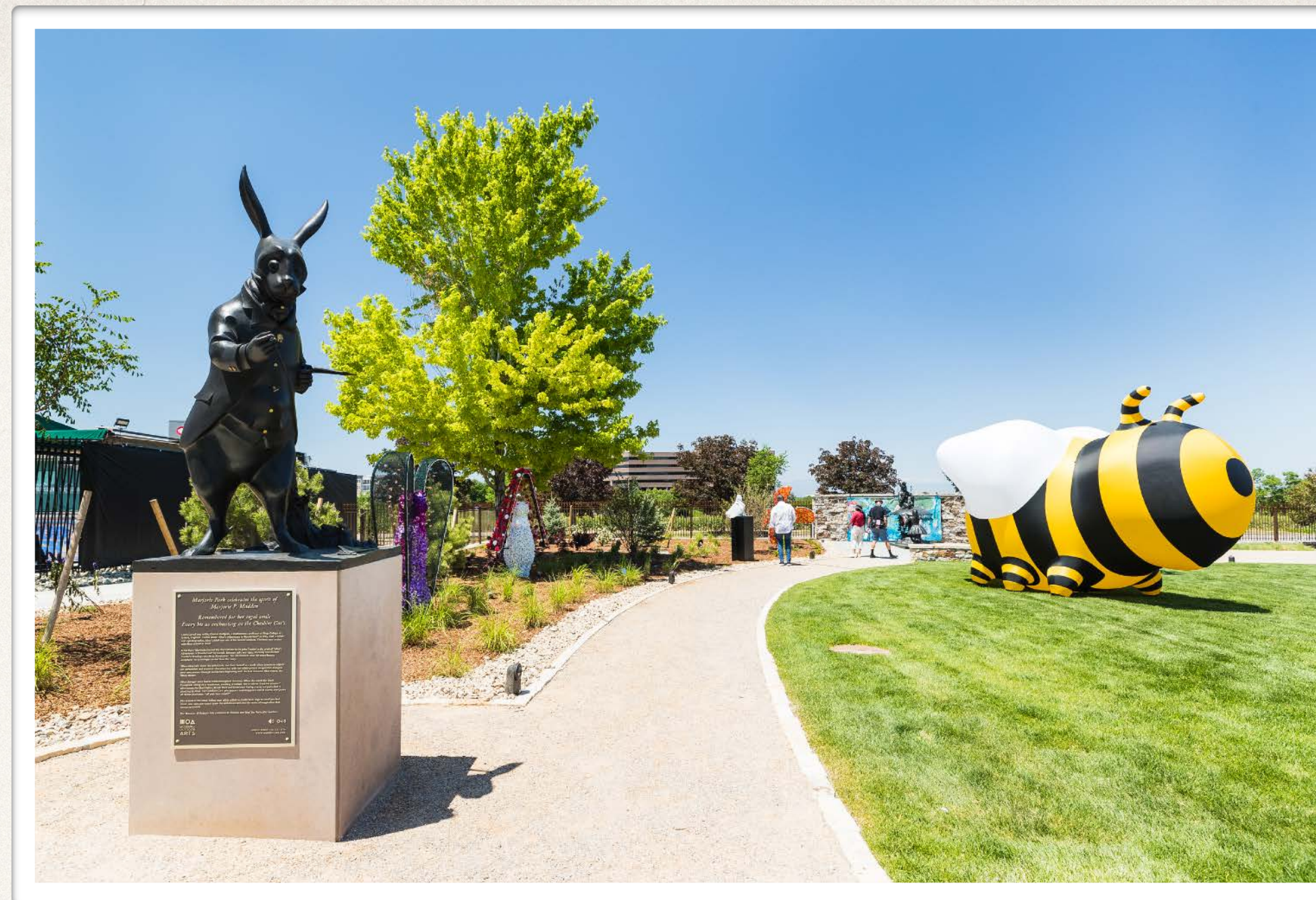
Venue Details

- ❖ Outdoor Venue located in Greenwood Village.
- ❖ Can be scaled to accommodate events of 50 - 3,000 attendees.
- ❖ Recently renovated and reopened Summer 2021.
- ❖ Over 40 sculptures throughout the property, including a life-size “Alice in Wonderland” bronze sculpture series.
- ❖ Lightrail accessible from downtown Denver.
- ❖ Endless configuration options to meet your needs.
- ❖ Spectacular Rocky Mountain backdrop with gorgeous sunsets.





Available for weddings,
corporate events, family
gatherings, graduation
parties and more!



❖ Considerations

- ❖ No liquor permits required.
- ❖ Liquor service provided by Fiddler's Green Amphitheatre concessionaire.
- ❖ No preferred caterer or rental companies creates flexibility.



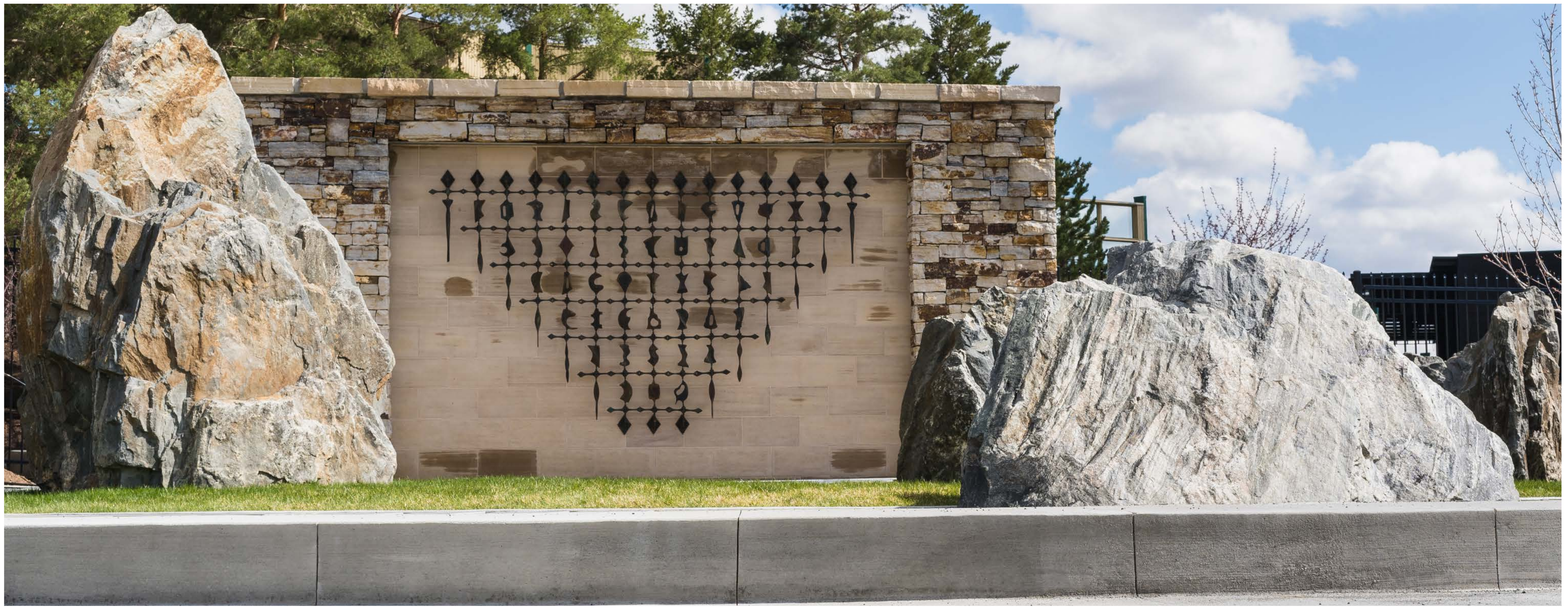
Marjorie Park

“The Wonderland Maze”

Capacity - seated/unseated

Amenities: Restrooms, VIP Green Room, Electricity, Audio capability, Rentals may be available upon request.

The Wonderland Maze is a magical 7-petal *vesica* structure based on sacred geometry. It is placed in the heart of Marjorie Park and acts as a focal point with the Rocky Mountains and gorgeous sunsets serving as a backdrop. Have your ceremony in the center of this art installation. Guests can be accommodated in a variety of seated or standing configurations or can gather around on the Maze itself. Extra seating is available on Folly Bridge or on the green spaces surrounding the Maze.



Marjorie Park

“The Zen Garden”

Capacity - seated/unseated

Amenities: Restrooms, VIP Green Room, Electricity, Audio capability, Rentals may be available upon request.

The Zen Garden is a serene and intimate environment on the West side of Marjorie Park. The couple can take their vows in front of the Neil Goodman bronze wall art installation, “Biography,” or nestle in between two of the monolithic boulders that comprise the Torval Keller installation, “Silent Resonance.” 25 guests or fewer can be seated or standing within the rock installation.



Marjorie Park

“The Croquet Grounds”

Capacity - seated/unseated

Amenities: Restrooms, VIP Green Room, Electricity, Audio capability, Rentals may be available upon request.

Our largest event space, *The Croquet Grounds* has capacity for more than one hundred seated guests. The couple can install an altar within the Croquet Grounds or immerse themselves in the 7-petal *vesica* while their guests look on from the Croquet Grounds.

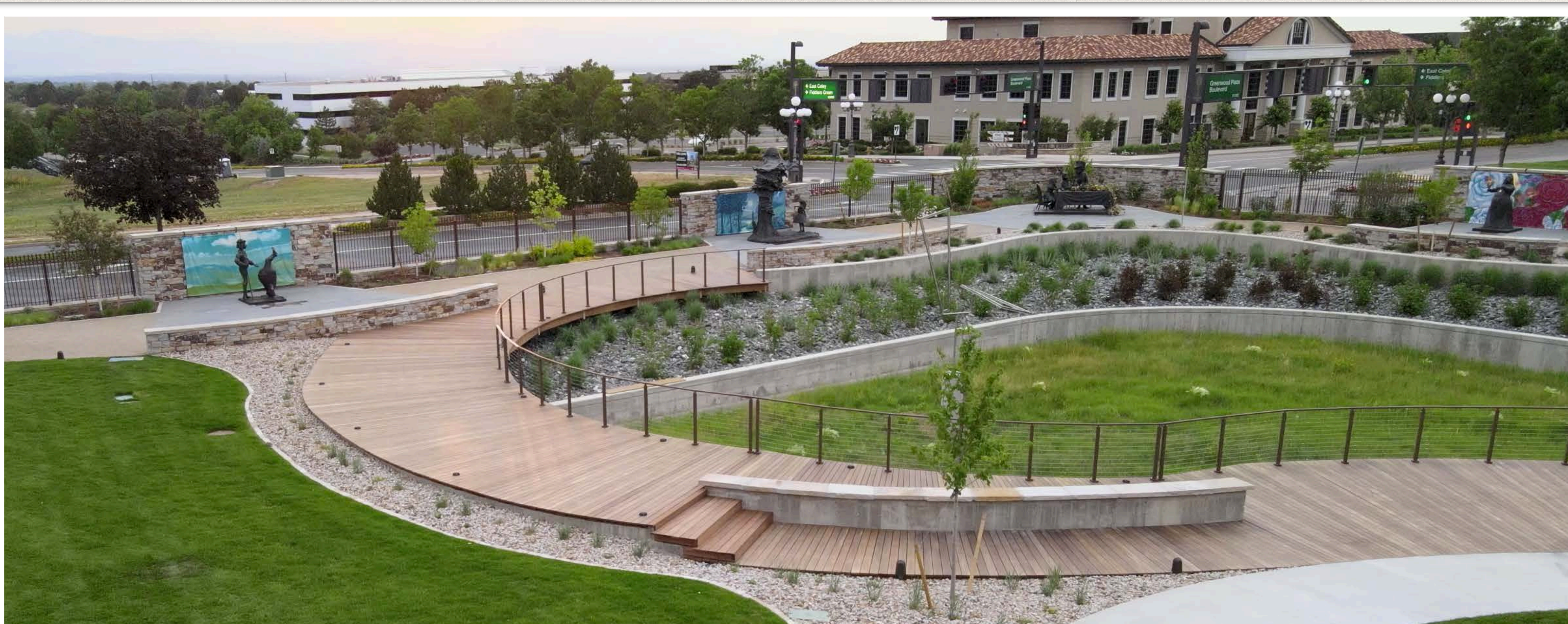


Marjorie Park “Wonderland”

Capacity - seated/unseated

Amenities: Restrooms, VIP Green Room, Electricity, Audio capability, Rentals may be available upon request.

Wonderland features a variety of life-size *Alice in Wonderland* bronze sculptures to hold your ceremony and accommodates 20 or fewer guests at each site.



Marjorie Park

“Folly Bridge”

Capacity - seated/unseated

Amenities: Restrooms, VIP Green Room, Electricity, Audio capability, Rentals may be available upon request.

Folly Bridge spans the scenic overlook into the meadow where kinetic sculptures from MOA’s renowned art collection are on permanent display. 25 guests or fewer can be accommodated on the bridge itself with room for additional guests on the surrounding green or 7-petal *vesica*.







Wedding Package Includes

- Reservations for Majorie Park guarantee exclusive access to the grounds for the time frame specified in your contract.
 - We do not host multiple events at once so reservations are carefully planned around your required time frame to allow uninterrupted use.
 - Reservations include access to the VIP Green rooms backstage at Fiddler's Green Amphitheatre for the wedding party.
 - All events include an on-site representative to assist with any facility questions or needs.
 - All event rentals include site preparation, security if required per MOA protocol, clean-up, special event permits, bar staff, site attendant, and basic audio set up for a toast or speech.
 - The MOA audio system is for speech purposes only and cannot support performance or event talent audio requirements.
-



Wedding Package Details

- Reservations for ceremony only are limited to one hour unless a four-hour reservation is made.
 - This includes set up and break down. Exclusive use is only for the reserved time in the rental agreement.
- Reservations for a wedding and reception package typically require an all-day reservation to provide time for rentals and catering set up and take down and other event logistics.
- Rental price does not include rental equipment such as tables, chairs, linens, sound systems, or shade structures.
- Marjorie Park does not provide a wedding officiant, or other attendants or planners.
- Marjorie Park does provide an on-site liaison for assistance with venue-related logistics.
- Marjorie Park does not have preferred vendors for rentals or catering; guests are free to choose their own providers.
- Marjorie Park requires use of the Fiddler's Green concessionaire and staff for service of alcoholic beverages. Preferred pricing is given to park rentals and private events.
- Reservations require a rental contract, proof of liability insurance, waiver of general liability for guests, waiver of COVID-19 liability for guests, rental deposit and damage deposit.*



Pricing Information

- \$1,500 per hour.
- \$3,500 for up to four hours.
- Starting at \$7,000 for eight hours.*
- Fiddler's Green Amphitheatre may be added to any park rental at an additional fee. Inquire about pricing for exclusive use of the full property, including the 17,000 seat Fiddler's Green Amphitheatre.

*Pricing may vary depending on the needs of your event. All outside rentals and associated costs are the responsibility of the lessee. 50% due at contract signing. Remaining 50% due 30 days prior to event. Terms and conditions apply.

Marjorie Park



Contact us for any questions or to
reserve a date for your event.

info@moaonline.org

303-806-0444 x0